



12204 MEADOW CREEK

Features & Amenities

- 5 Bedrooms, 4 Full Bathrooms, 1 Half Bath
- Master Bedroom with Sitting Area
- Master Bathroom with Soaking Tub, Double Vanities & Separate Shower with Heat Lamp
- Totally Renovated Gourmet Kitchen
- Top of the Line Kitchen Appliances:
 - Gaggenau Built-In Professional Oven in Addition to Double Wall Ovens
 - Viking 6-Burner Gas Cook-Top
 - Zephyr Milano Exhaust
 - Stainless Steel Refrigerator, Warming Drawer & Dishwasher
 - Blanco Oversized Double Sinks
 - Moen Faucet with Instant Hot
 - New Garbage Disposal (2011)
- Sun Light Filled, Fully Finished Walk-Out Lower-Level
- Private Lower-Level Guest Suite with Full Bathroom and En-Suite Walk Out Patio
- Custom Built Office with Built-In Shelves, Cabinets & Storage
- Plentiful Storage Space on all Levels
- 3 Mantled Fireplaces
- Crown Molding Throughout
- Palladian Windows
- 9 ft+ Ceilings
- New Carpet Throughout
- Recessed Lighting Throughout
- 2+ Acres on Private Setting
- 2-Car Garage with Separate Storage Area
- Invisible Fence Surrounding Entire Property
- Storage Shed
- Working Barn
- Free Form Swimming Pool
- 2 Flagstone Patios
- Cul-de-sac
- New Hot Water Heater (2011)
- Utilities: Electric
- 2-Zoned Heat & Cooling System
- New HVAC Units; Upstairs (2010), Downstairs (2009)
- Year Built: 1985
- Estimated Property Tax in First Full Fiscal Year of Ownership: \$11,812.60
- Schools:
 - Wayside ES
 - Herbert Hoover MS
 - Winston Churchill HS



12204 Meadow Creek, POTOMAC, MD 20854



Welcome to this stunning and private Potomac Oasis! 12204 Meadow Creek sits on 2+ acres and offers the tranquility and charm of an extraordinary place to call home. Both the inside and outside have been transformed and renovated with superior craftsmanship and exquisite designer style. The Main-Level with its renovated space has a more open floor plan that provides a natural flow from room to room, which is perfect for entertaining and comfortable family living. The Kitchen has been totally renovated featuring; top of the line professional stainless steel appliances, granite counter-tops, ceramic tile floor, crown moldings, and a custom built walk-in pantry. From the Kitchen you walk out to a private deck, which overlooks the spectacular backyard. Sunlight fills this entire home no matter which level you are on, and it shines over the entire backyard. The Upper-Level has 4 Bedrooms and 3 Full Bathrooms, all with new carpet and bright windows. This homes Lower-Level offers a Guest Suite, Full Bathroom and En-Suite Patio. Double French Doors open up to this delightful Patio that has ceiling fans, fresh blossoms, and a gorgeous seating area, all overlooking the beautifully designed Swimming Pool and Lush Gardens, it is truly breath taking! Enjoy, and see how magnificent this home is from both inside and out!!

Michael Matese

Direct: 301-806-6829

Office: 301-907-7600

Email: Mike@michaelmatese.com



Long & Foster Real Estate

Bethesda Gateway Office

4650 East-West Highway

Bethesda, MD 20814



Michael Matese

Direct: 301-806-6829

Office: 301-907-7600

Email: Mike@michaelmatese.com





FOYER



DINING ROOM



FAMILY ROOM



LIVING ROOM



GOURMET KITCHEN



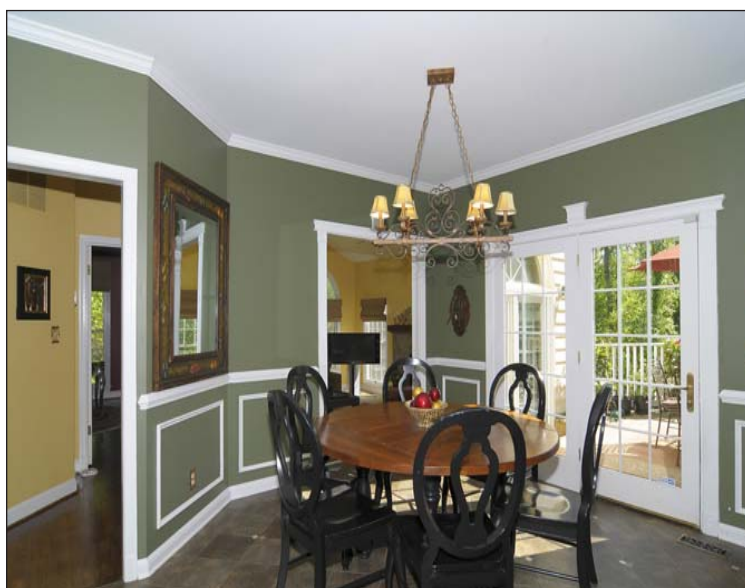
GOURMET KITCHEN



GUEST SUITE



GUEST SUITE PATIO



BREAKFAST ROOM



REAR DECK



POOL & SUN DECK



BACKYARD 2+ ACRES